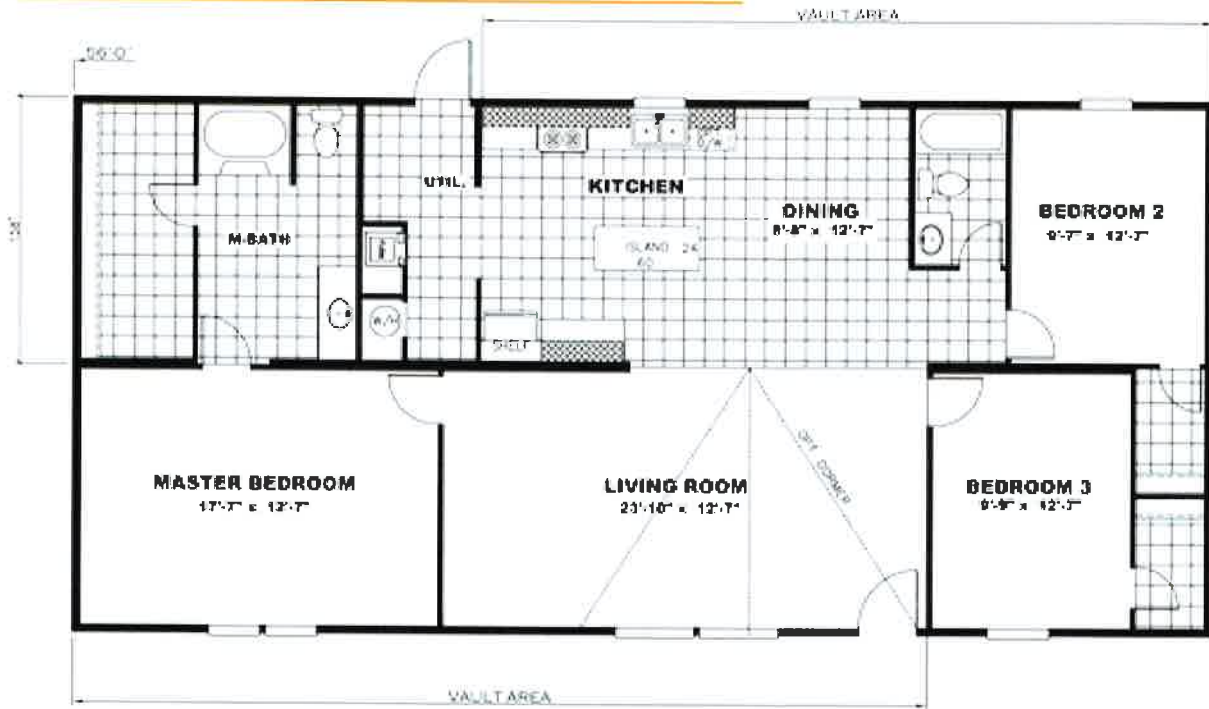




## The TruMH Ali



**At A Glance**

- 28' x 56'
- 1475 Square Feet
- 3 Bedrooms, 2 Bathrooms

**Construction**

- 2' x 6' Floor Joists on 19.2" Centers
- 2' x 4' Exterior Walls on 16" Centers

**Insulation**

- R-22 Insulation in Floor
- R-11 Insulation in Walls
- R-28 Insulation in Ceiling



For additional photos and videos please like us on Facebook!



Trinity Homes - Mineral Wells WV

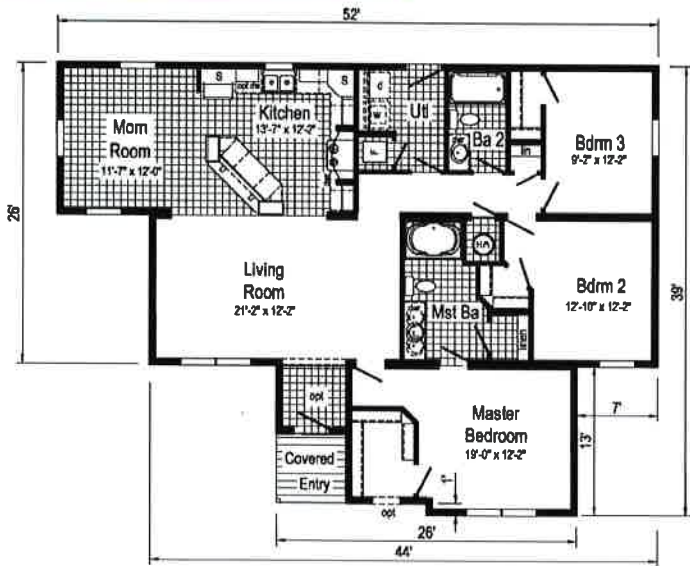
49 Sams Creek Road  
Mineral Wells, WV 26150  
304-489-8400



**Back to Show Models**



## The R-Anell Bella



**Optional Glamour Bath**  
(omits linen)



**At A Glance**

- 52' x 39' Tiered
- 1547 Square Feet
- 3 Bedrooms, 2 Bathrooms

**Construction**

- 2' x 10' Transverse Floor System
  - 2' x 6' Exterior Walls on 16" Centers
- Insulation**
- R-13 Fiberglass Insulation in Walls
  - R-19 Fiberglass Insulation in Floor
  - R-31 Avg. Blown Insulation in Ceiling



For additional photos and videos please like us on Facebook!



Back to Show Models

Trinity Homes - Mineral Wells WV  
19 Sams Creek Road  
Mineral Wells, WV 26150  
304-489-8400



## The Skyline Skyliner 4751



### At A Glance

- 28' x 52'
- 1356 Square Feet
- 3 Bedrooms, 2 Bathrooms

### Construction

- 2' x 6' Floor Joists on 16" Centers
- 2' x 6' Exterior Walls on 16" Centers
- R-19 Fiberglass Insulation in Walls
- 1/2" Finished & Painted Drywall Throughout

**SKYLINE**

For additional photos and videos please like us on Facebook!



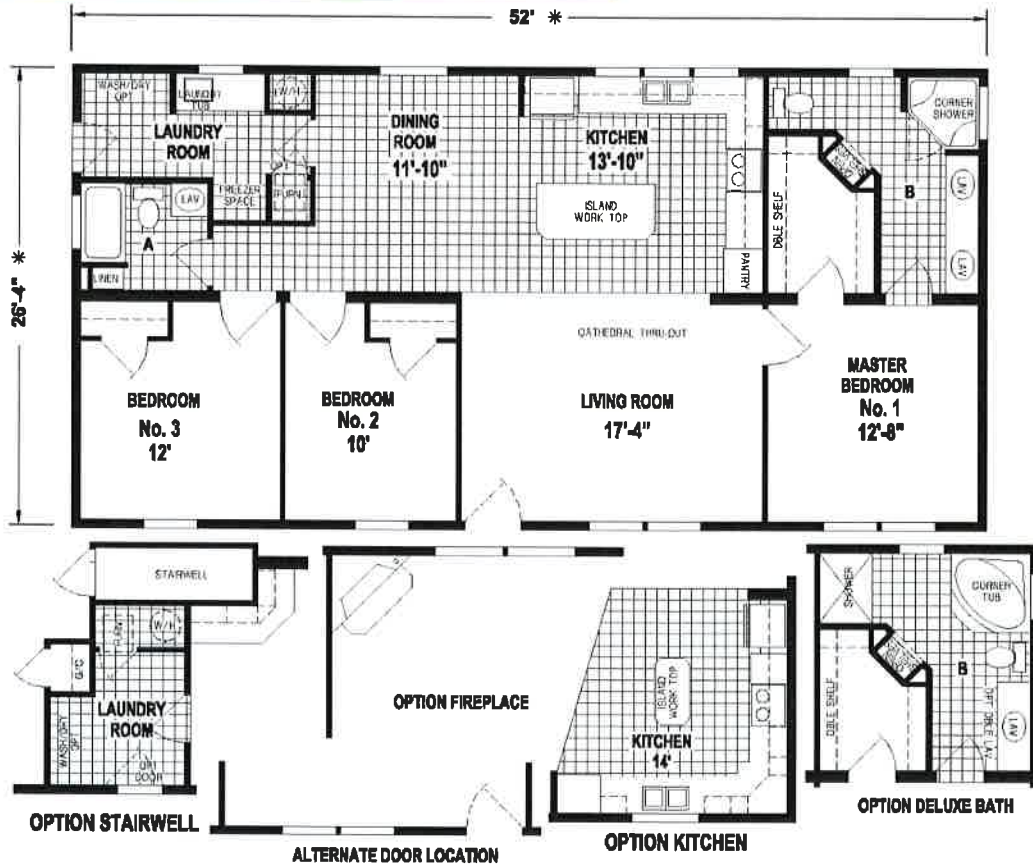
[Back to Show Models](#)

 Trinity Homes - Mineral Wells WV  
 49 Sams Creek Road  
 Mineral Wells, WV 26150  
 304-489-8600





## The Skyline Brookstone 887



### At A Glance

- 28' x 52'
- 1359 Square Feet
- 3 Bedrooms, 2 Bathrooms

### Construction

- 2' x 6' Floor Joists on 16" Centers
- 2' x 6' Exterior Walls on 16" Centers
- R-19 Fiberglass Insulation in Walls
- 1/2" Finished & Painted Drywall Throughout

**SKYLINE**

For additional photos and videos please like us on Facebook!



Back to Show Models


 Trinity Homes - Mineral Wells WV  
 49 Sams Creek Road  
 Mineral Wells, WV 26150  
 304-489-8400



## The TruMH Tyson



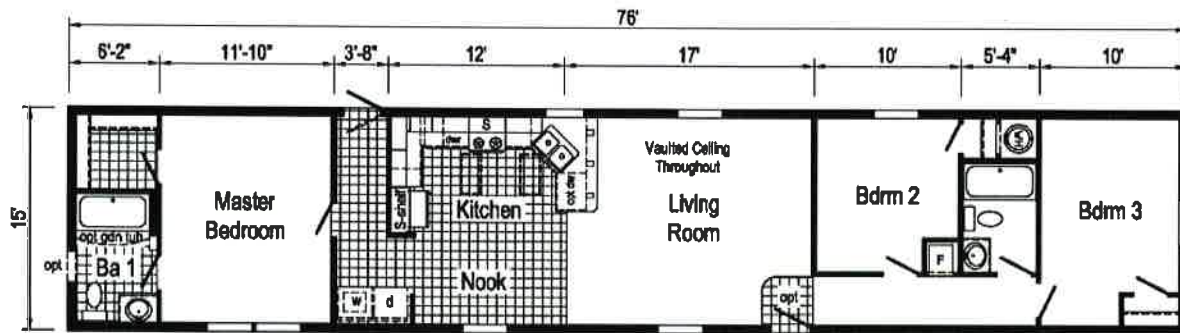
### At A Glance

- 28' x 68'
- 1791 Square Feet
- 4 Bedrooms, 2 Bathrooms





## The Commodore Blazer



### At A Glance

- 16' x 76'
- 1140 Square Feet
- 3 Bedrooms, 2 Bathrooms

### Construction

- 2' x 8' Transverse Floor System
  - 2' x 6' Exterior Walls on 16" Centers
- ### Insulation
- R-19 Fiberglass Insulation in Walls
  - R-14 Fiberglass Insulation in Floor
  - R-25 Avg. Blown Insulation in Ceiling



For additional photos and videos please like us on Facebook!



[Back to Show Models](#)



Trinity Homes - Mineral Wells WV

49 Sams Creek Road  
Mineral Wells, WV 26150  
304-439-8400





## The TruMH Steal I



### At A Glance

- 14' x 66'
- 924 Square Feet
- 3 Bedrooms, 2 Bathrooms

### Construction

- 2' x 6' Floor Joists on 19.2" Centers
- 2' x 4' Exterior Walls on 16" Centers

### Insulation

- R-22 Insulation in Floor
- R-11 Insulation in Walls
- R-28 Insulation in Ceiling



For additional photos and videos please like us on Facebook!



Back to Show Models

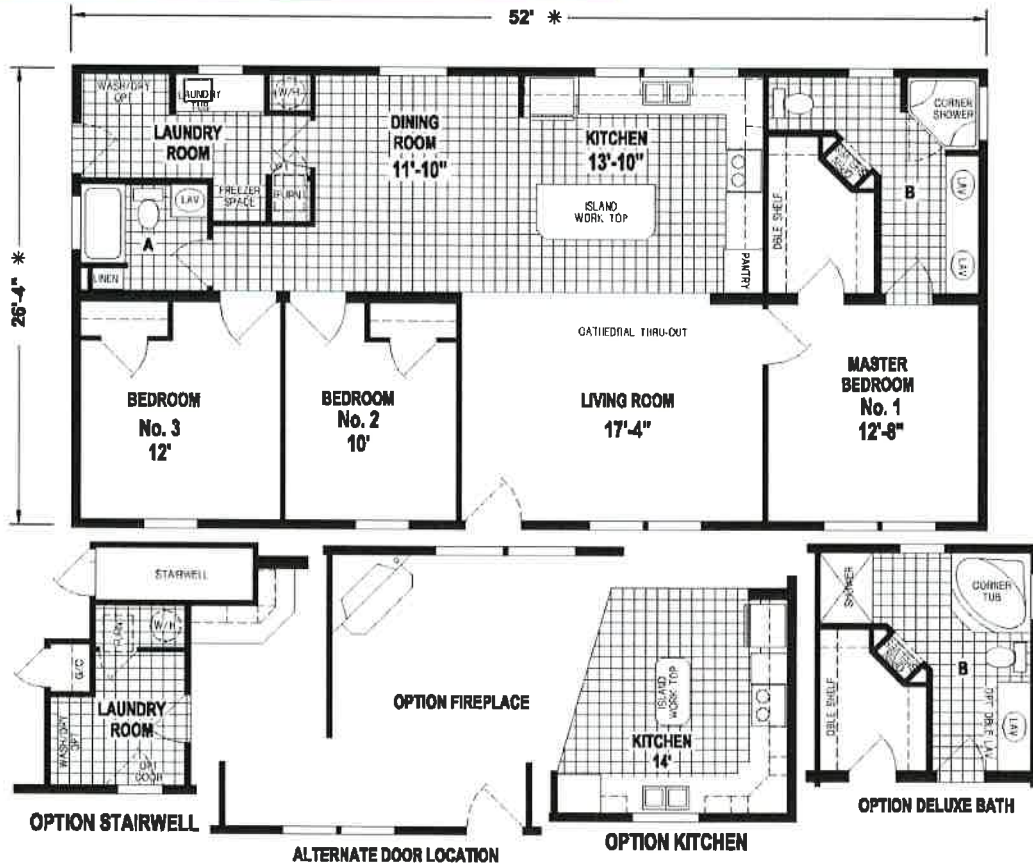


Trinity Homes - Mineral Wells WV

49 Sams Creek Road  
Mineral Wells, WV 26150  
304-489-8400



## The Skyline Brookstone 887



### At A Glance

- 28' x 52'
- 1359 Square Feet
- 3 Bedrooms, 2 Bathrooms

### Construction

- 2' x 6' Floor Joists on 16" Centers
- 2' x 6' Exterior Walls on 16" Centers
- R-19 Fiberglass Insulation in Walls
- 1/2" Finished & Painted Drywall Throughout

**SKYLINE**

For additional photos and videos please like us on Facebook!



Back to Show Models


 Trinity Homes - Mineral Wells WV  
 49 Sams Creek Road  
 Mineral Wells, WV 26150  
 304-489-8400



## The Manorwood Buckingham



### At A Glance

- 28' x 36'
- 1872 Square Feet
- 4 Bedrooms, 2 Bathrooms

### Construction

- 2' x 6' Transverse Floor System
  - 2' x 6' Exterior Walls on 16" Centers
  - 2' x 4' Interior Walls on 24" Centers
- Insulation
- R-19 Fiberglass Insulation in Walls
  - R-33 Blown Cellulose Insulation in Ceiling



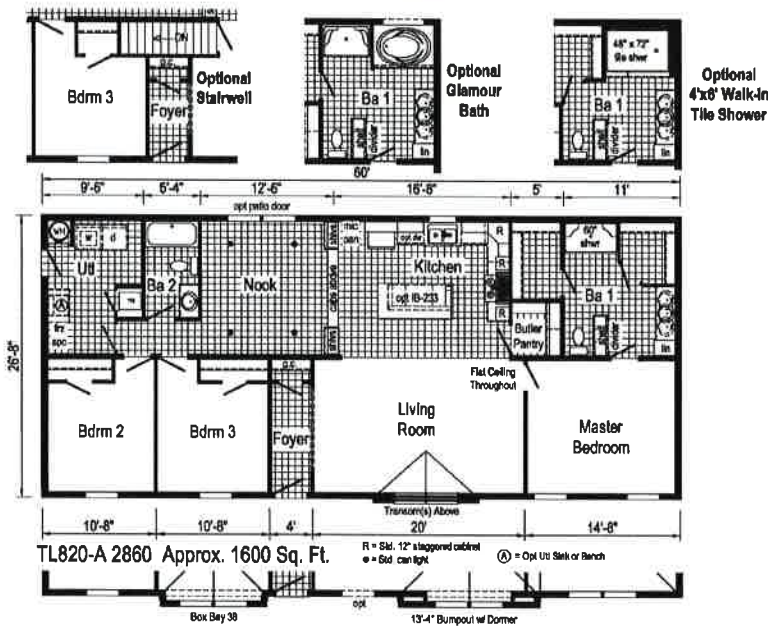
For additional photos and videos please like us on Facebook!



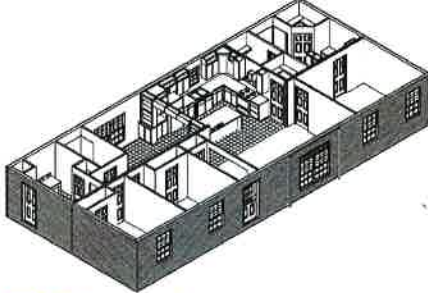
Back to Show Models



## The Colony Timberland 820



### Curb Side Exterior Options



#### At A Glance

- 28' x 60'
- 1600 Square Feet
- 3 Bedrooms, 2 Bathrooms

