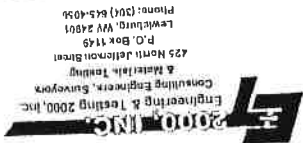
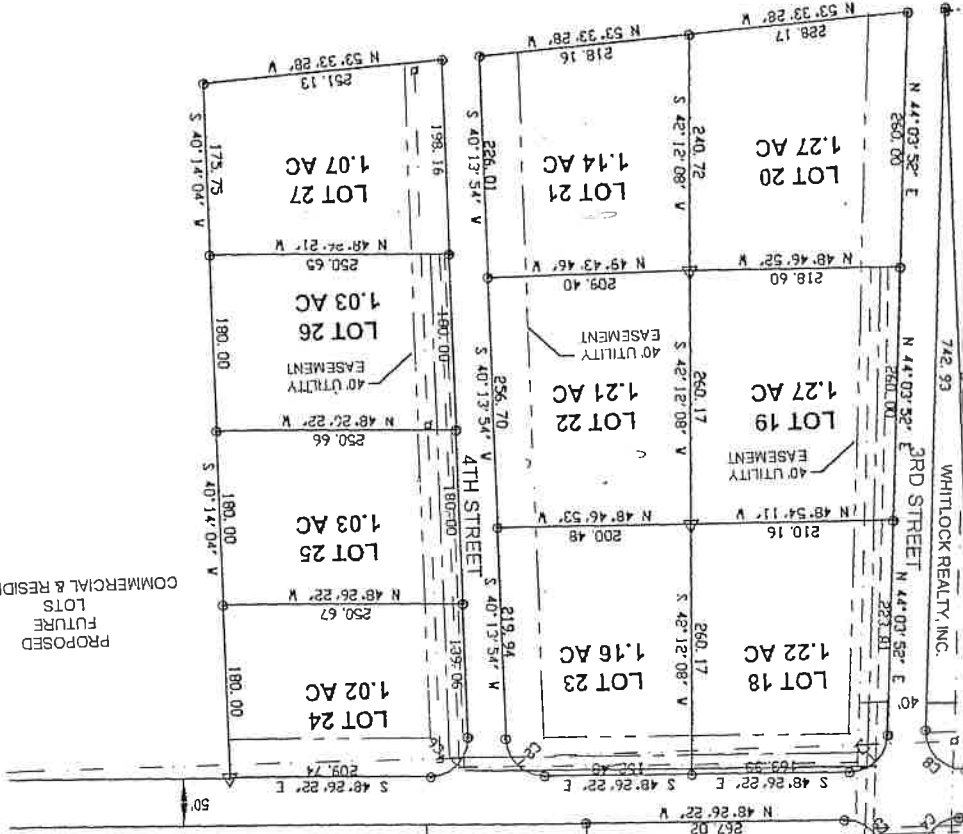


WHITLOCK REALTY, INC.
 DB 414 PG 202
 CITY OF LEWISBURG
 ZONED I-C
 INDUSTRIAL-COMMERCIAL



PREPARED BY:

PLAT SHOWING SUBDIVISION
 FOR
 PHASE 1
 COMMERCIAL & INDUSTRIAL PARK
 LEWISBURG DISTRICT
 GREENBRIER COUNTY, WEST VIRGINIA
 DATE: NOVEMBER 2001
 SCALE: 1" = 200'
 SURVEY VOL: 21-131



* ALL LOTS ARE A PART OF DEED BOOK 405
 PAGE 265, TAX MAP 19 PARCEL 10.

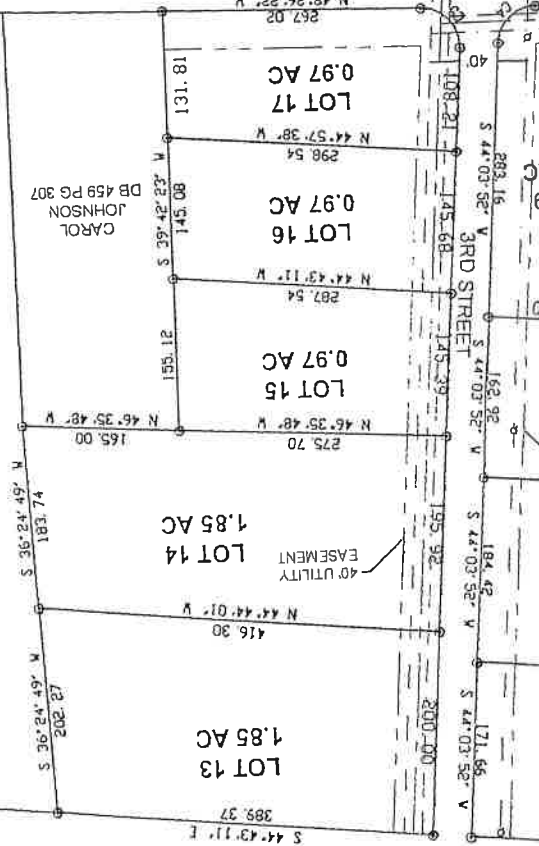
LEGEND

- 40' UTILITY EASEMENT
- PROPOSED GASLINE
- PROPOSED WATER LINE
- PROPOSED SEWER LINE
- PROPOSED POWER LINE WITH GUY WIRE
- PERMANENT MONUMENT
- 1/2" REBAR

LINE	BEARINGS	DISTANCE
L1	N 54° 23' 58" W	19.70
L2	N 61° 39' 32" E	44.53
L3	N 55° 56' 23" E	63.43
L4	N 49° 43' 37" W	112.56
L5	N 50° 5' 11" W	70.31
L6	S 49° 43' 37" E	10.06

ARC	RADIUS	CHORD LENGTH	CHORD BEARINGS
C1	40.00	55.32	N 87° 48' 45" E
C2	40.00	55.91	S 4° 06' 14" E
C3	30.00	40.56	N 7° 09' 56" W
C4	40.00	54.67	S 87° 10' 07" W
C5	60.15	77.79	N 2° 11' 19" W
C6	40.00	57.22	N 85° 53' 46" E
C7	43.80	63.80	S 82° 44' 44" W
C8	40.00	58.49	S 2° 49' 34" E

WHITLOCK REALTY, INC.
 DB 405 PG 265
 ZONED RESIDENTIAL



WHITLOCK REALTY, INC.
 DB 405 PG 271
 ZONED COMMERCIAL
 BY COUNTY
 AUGUST 2001

