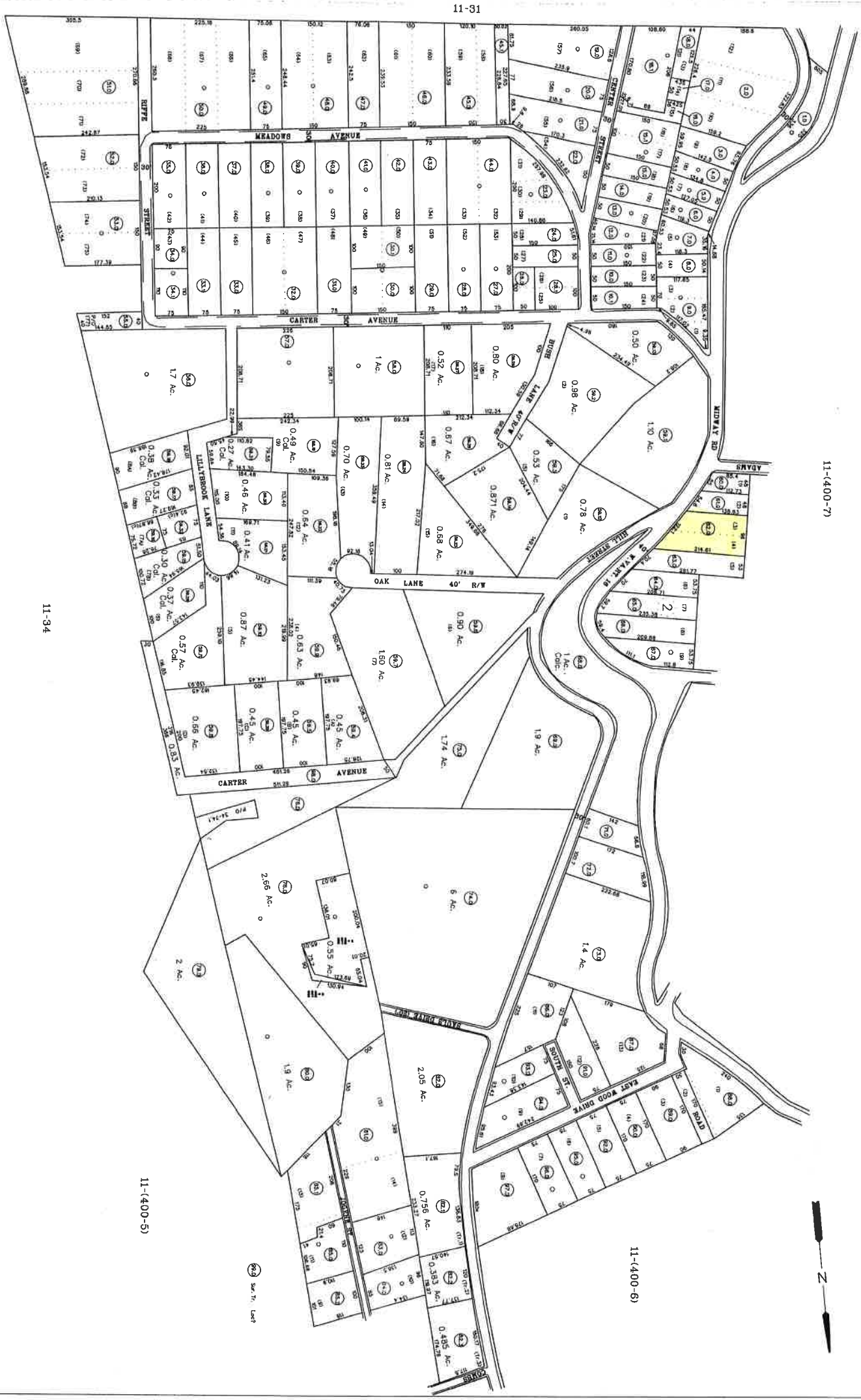


11-(400-7)

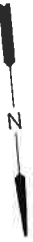


11-31

11-34

11-(400-5)

11-(400-6)



For Tax Purposes Only
 Prepared by
RALEIGH COUNTY ASSESSOR'S OFFICE
 DREMA B. EVANS, ASSESSOR
 BECKLEY, WV

LEGEND	
Property Line	1.00/02/96 C.L.S.
Right of Way or Easement	2.00/20/00 C.L.S.
Corporate Line	3.00/20/00 C.L.S.
State Line	4.00/14/04 C.L.S.
County Line	5.00/14/04 C.L.S.
2000 Census	6.00/14/04 C.L.S.
7.00/14/04 C.L.S.	
8.00/14/04 C.L.S.	

RESTRICTION

All tax maps created under the provisions of reoperal legislation are the property of Raleigh County West Virginia and the reproduction, copying, distribution or sale of such tax maps or any copies thereof without the written permission of the Raleigh County Assessor is prohibited by law.



COUNTY OF RALEIGH

Office of Assessor
 Beckley, W. Va.

TOWN DISTRICT
 District 11 Map No. 400-8
 Date and Time of Printing: 10 Apr 2008
 Print No: 100
 Scale: 1" = 800'