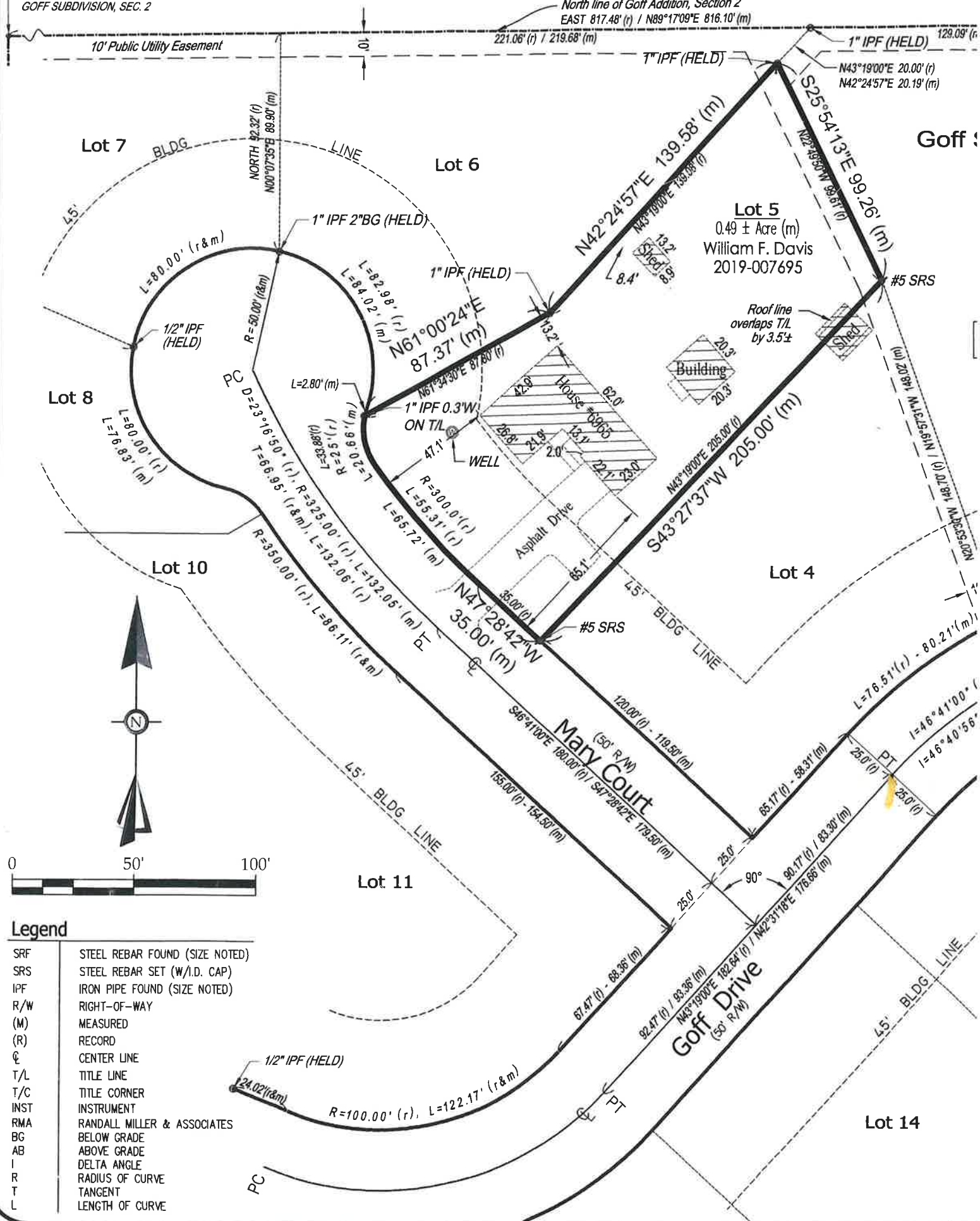


PLAT OF RETRACEMENT SURV

1/2" IPF PREVIOUSLY FOUND AT NW CORNER GOFF SUBDIVISION, SEC. 2

North line of Goff Addition, Section 2
EAST 817.48' (r) / N89°17'09"E 816.10' (m)

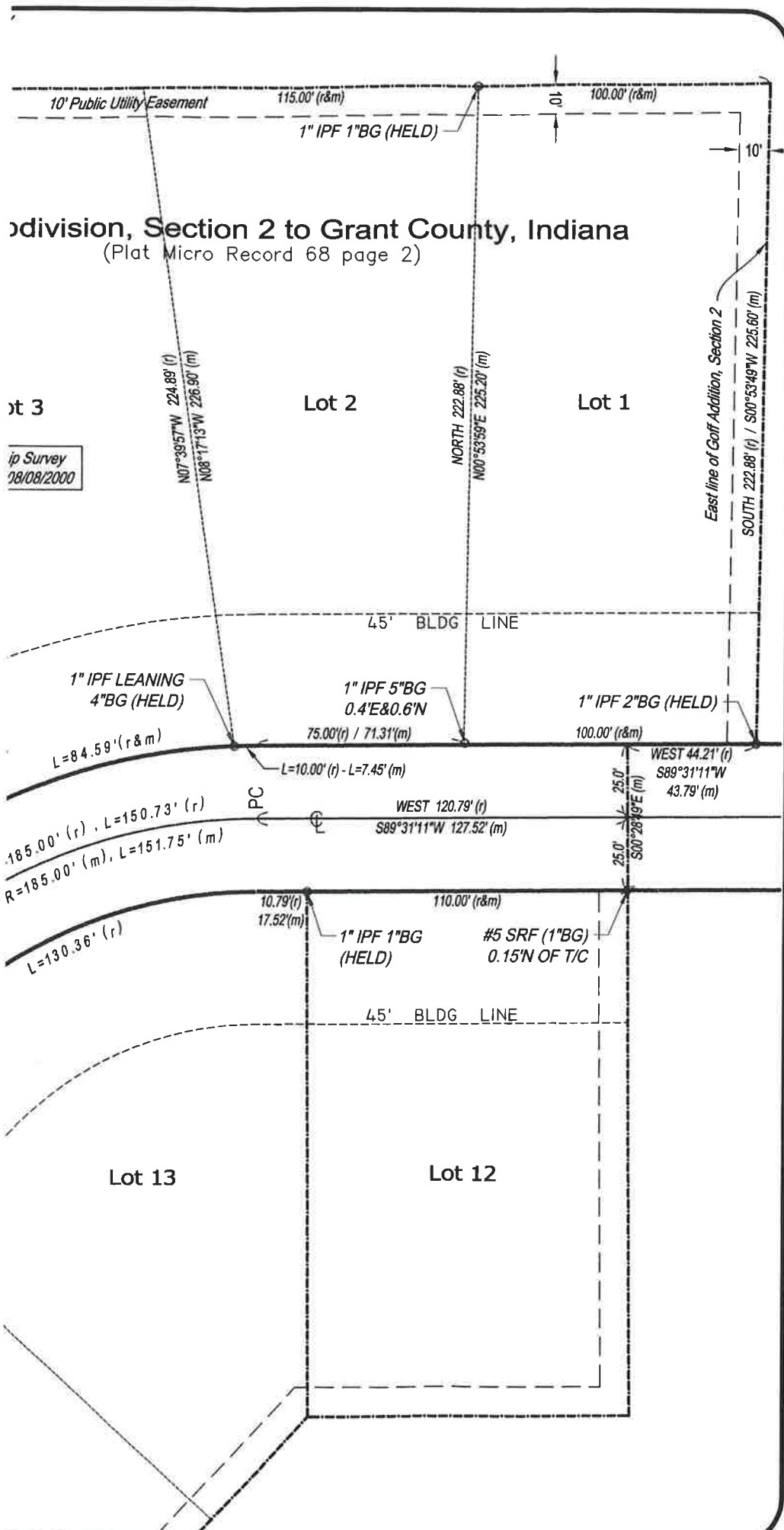


Goff :

Lot 5
0.49 ± Acre (m)
William F. Davis
2019-007695

Legend	
SRF	STEEL REBAR FOUND (SIZE NOTED)
SRS	STEEL REBAR SET (W/I.D. CAP)
IPF	IRON PIPE FOUND (SIZE NOTED)
R/W	RIGHT-OF-WAY
(M)	MEASURED
(R)	RECORD
CL	CENTER LINE
T/L	TITLE LINE
T/C	TITLE CORNER
INST	INSTRUMENT
RMA	RANDALL MILLER & ASSOCIATES
BG	BELOW GRADE
AB	ABOVE GRADE
Δ	DELTA ANGLE
R	RADIUS OF CURVE
T	TANGENT
L	LENGTH OF CURVE





Division, Section 2 to Grant County, Indiana
 (Plat Micro Record 68 page 2)

Lot 3

ip Survey
 08/08/2000

Corporate Office
 145 E. Third Street, Marion, IN 46952
 Ph: (765) 662-1284
 marion@rmasurveying.com

333 E. Washington Street, Muncie, IN 47305
 Ph: (765) 289-1917
 muncie@rmasurveying.com

261 S. Wabash Street, Wabash, IN 46992
 Ph: (260) 563-4467
 wabash@rmasurveying.com

134 N. Main Street, Monticello, Indiana 47960
 Ph: (574) 583-0478
 monticello@rmasurveying.com

RMA

Surveyors ♦ Engineers ♦ Consultants

www.rmasurveying.com

JOB NO: 20-0022
 CREW: RV
 DRAWN BY: SF
 CHECKED BY: MG TR
 DATE: March 23, 2020

RUDY VUGTEVEEN, LS20800137

SHEET
1 OF 2